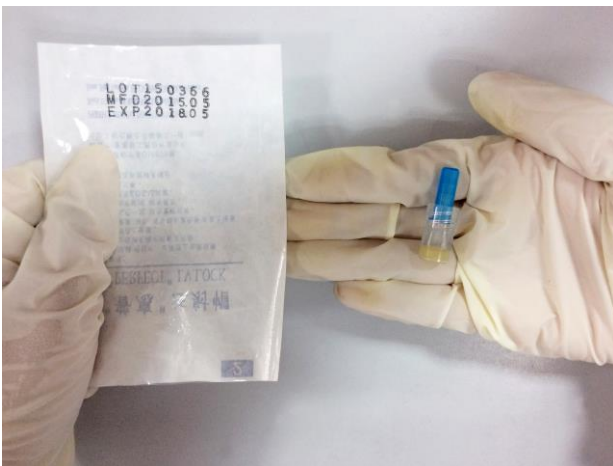




1.

Inspect packaging and system for any damage or defects. Do not use if external envelope is damaged.



2.

Open sterilized packaging bag and take product out.



3.

Attach I.V Lock tip to the end of I.V Catheter.



4.

Insert needle to the rubber pad of I.V Lock when inject with syringe and I.V set.

Discard them in the waste collector and adhere to your instruction's policy for safe disposal of all medical waste.